

CONSULTANTS

MILESTONE

FOR BIDDING

NO.	DATE	DESCRIPTION
1	10-14-19	PER ADDENDUM NO. 1

REVISIONS

DATE

DESCRIPTION

10-14-19 PER ADDENDUM NO. 1

REFER TO EQUIPMENT MANUFACTURER'S SHOP DRAWING

1" 0.5" 0 1" 2" 3"

PLAN SHEET DESIGNATION

- COVER
- G - GENERAL
- H - HAZARDOUS MATERIALS
- C - CIVIL
- L - LANDSCAPE
- S - STRUCTURAL
- A - ARCHITECTURAL
- I - INSTRUMENTATION
- Q - EQUIPMENT
- F - FIRE PROTECTION
- P - PLUMBING
- M - MECHANICAL
- E - ELECTRICAL
- T - TELECOMMUNICATIONS
- R - RESOURCE

PROJECT NO: 180919.44

SCALE: AS NOTED

DATE: 9-24-19

DESIGNED BY: HDH

DRAWN BY: RGE

CHECKED BY: HDH

CLIENT

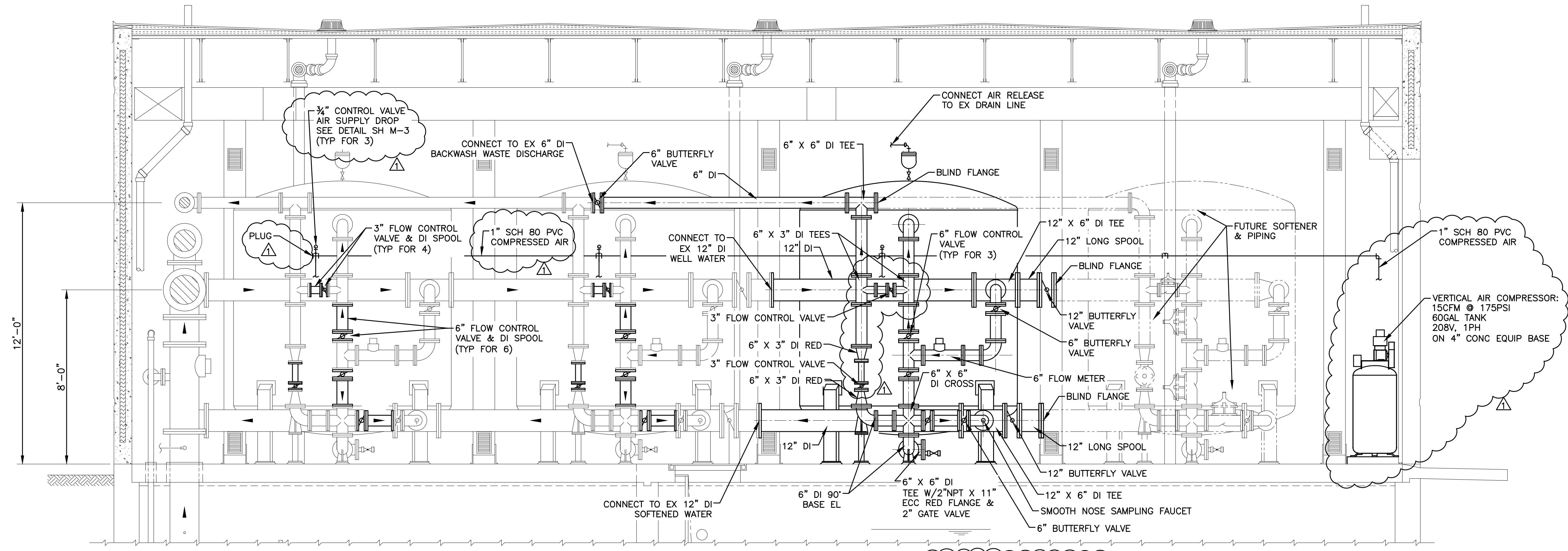
VILLAGE OF ELWOOD, ILLINOIS

**WATER SYSTEM IMPROVEMENTS
WATER TREATMENT SOFTENER
ADDITION**

SHEET TITLE

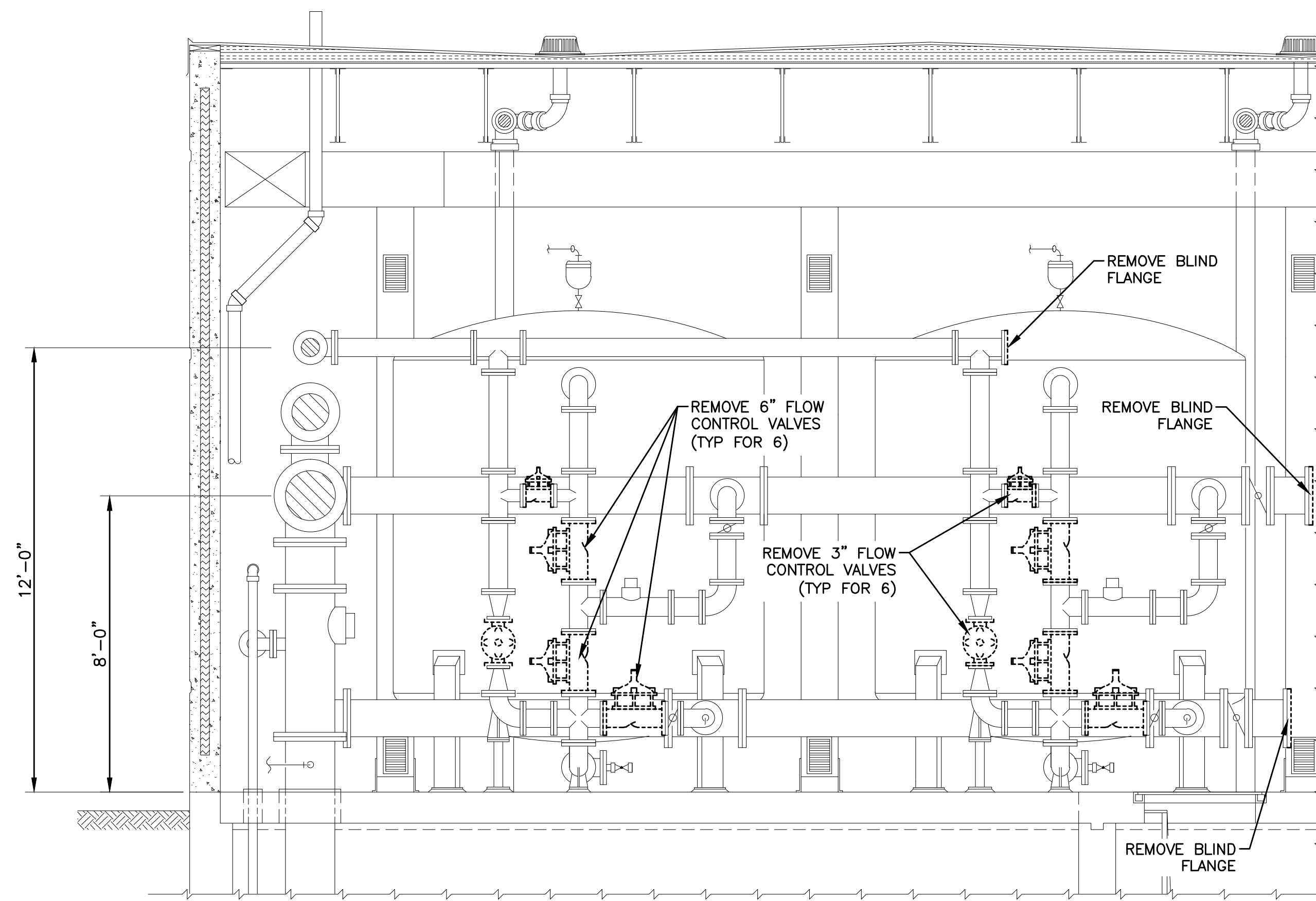
WATER TREATMENT PLANT SECTIONS

M-2

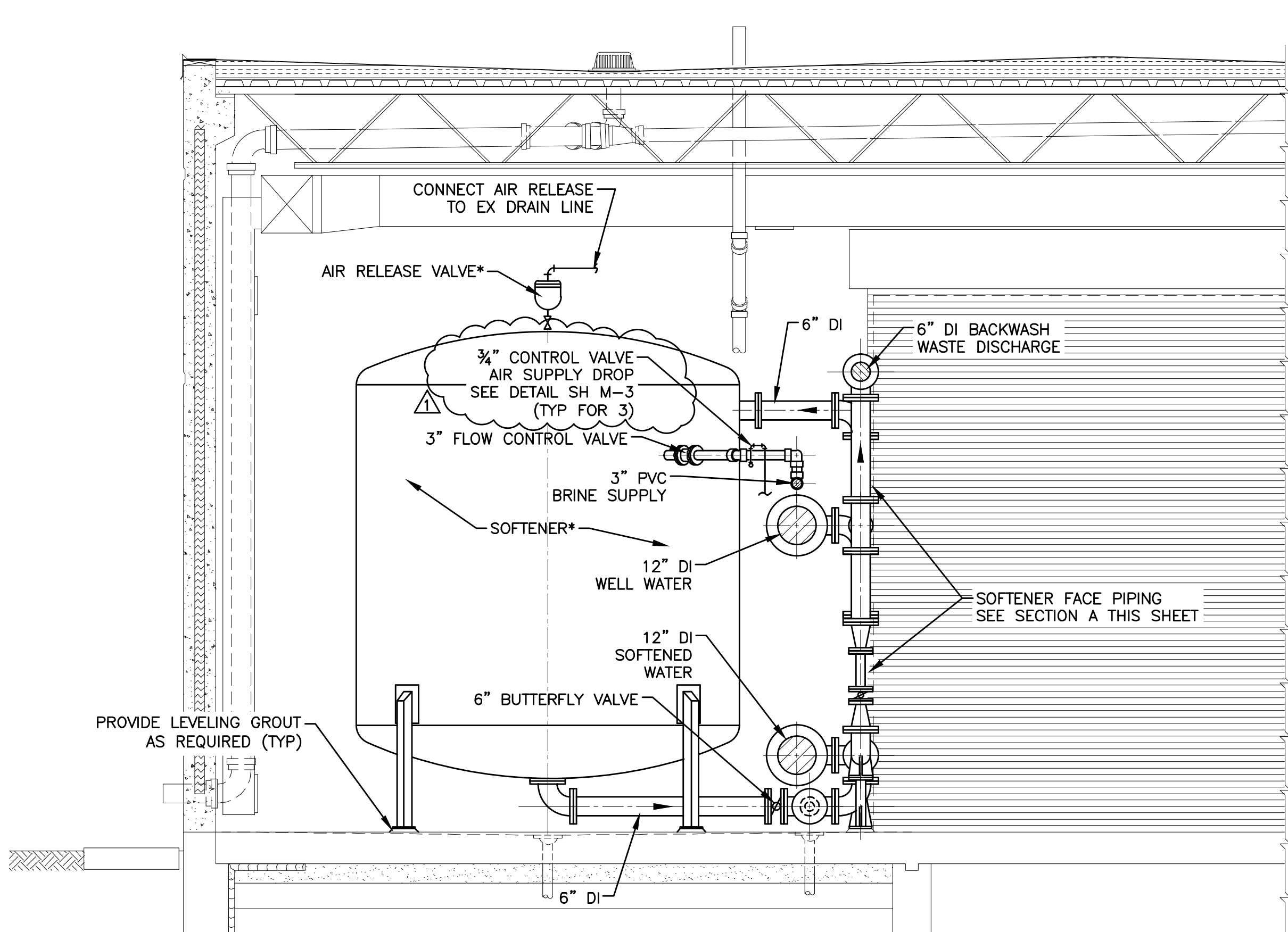


SECTION A
SCALE: 3/8" = 1'-0"
M-1

NOTE: VALVE LOCATIONS AND PIPING TO MATCH EX SOFTENER PIPING CONFIGURATION.



SECTION A (DEMOLITION)
SCALE: 3/8" = 1'-0"
M-1



SECTION B
SCALE: 3/8" = 1'-0"
M-1

I:\CRYSTAL LAKE\ELWOOD\180919-WATERSYSTEM\44-WATER TREATMENT PLANT\CAD\DWGS\CURRENT\WATER TREATMENT PLANT SECTIONS
 Plotted: 10/14/19 By: 064RGE
 Copyright © 2019, By: Baxter & Woodman, Inc.
 State of Illinois - Professional Design Firm
 License No. - 184-001121 - Expires 4-30-19