



# WASTE MANAGEMENT

800-796-9696

## Refuse and Recycling Guide for the Village of Elwood

**PICK UP DAY IS FRIDAY, EFFECTIVE JULY 11, 2008.**

All refuse, recycling and yard waste should be placed out for collection by 6:00 am on the designated pick up day.

### Refuse Collection

- Each resident provided with one 96-gallon cart to be used as the primary refuse container.
- Additional refuse materials may be placed in bags or 32-gallon containers next to the cart. Please do not use containers that exceed 32-gallons in size or 50 pounds in weight.
- **One** (1) bulk item such as furniture pieces will be collected with the weekly pick up
- Carpet is considered a bulk item and must be cut and rolled into 4-foot lengths and each roll must not weigh more than 50 pounds. Up to 4 rolls will be accepted as the bulk item.
- An additional 96-gallon wheeled cart may be rented for \$36.00 per year.

### Recycling Collection

- One 18-gallon bin will be provided to new homeowners for recycling
- Additional bins are available for \$7.00 each
- Recycling includes tin, aluminum, news print, cardboard, glass, plastics
- See reverse side for specific instructions on how to recycle

### Yard Waste (April 1 through November 30)

- Yard waste must be placed in kraft paper bags which can be purchased at local retail stores
- Residents may rent a 96-gallon yard waste cart for \$36.00 a year.
- Brush and branches must be cut into 4-foot lengths, bundled with string or twine. Each bundle must not exceed 50 pounds. Unbundled brush will not be accepted.

REMEMBER: A healthy lawn needs its clippings- please mulch when ever possible. Mulching is recycling!

### Restricted Items: The following items will not be collected

Construction/demolition materials	White Goods – (Call WM for pick up options)
Large automotive parts	Hazardous wastes (paints, oils, flammables, hot ash)
Tires	Materials from flooding, fires, evictions

### Home Improvement Project?

Call Waste Management at 800 796-9696 for large projects – we have a variety of roll-off containers for your home improvement or project needs.

### Medical Waste / Household Hazardous Waste / Electronics

- Toxic products such as automotive batteries, oil base paints, insecticides, oil, anti-freeze, etc. cannot be collected through your residential pickup.
- For tips on where to dispose of these now, contact the Illinois Environmental Protection Agency at (217) 782-9285 or call the Will County Waste Services Division at (815) 727-8834.
- Syringes used for home medical purposes may only be disposed of in rigid plastic containers. "Sharps" containers designed for syringe disposal can be obtained through your local pharmacy.
- Will County offers several drop off locations for electronic recycling. Call the Will County Waste Services Division at (815) 727-8834 or go to their website at [www.willcountylanduse.com](http://www.willcountylanduse.com) for locations.

### Holiday Schedule

Collection will be conducted one day later if the holiday occurs before or on the regular collection day

New Year Day	Labor Day
Memorial Day	Thanksgiving
Independence Day	Christmas Day



# Your Guide To Bin Recycling

Follow these simple instructions in preparing your materials for recycling.



## NEWSPAPERS, NEWSPRINT, and MIXED PAPER PRODUCTS


Various types of low grade mixed papers are acceptable, including:


- CARDBOARD BOXES - We request flattened and cut down to 1 foot in diameter or less.
- CHIPBOARD BOXES - cereal boxes, shoe boxes, paper tubes, soda/beer cartons.
- BROWN PAPER GROCERY BAGS
- PHONE BOOKS and MAGAZINES
- MIXED HOUSEHOLD PAPERS Including used mail.
- LARGE PIZZA BOXES - Please break down, large boxes can jam the container.


## CONTAINERS AND OTHER MATERIALS


A variety of different types of containers will all be accepted for recycling, including:


- GLASS JARS & BOTTLES - Food and beverage containers - clear, green, blue, brown. Does NOT include... Window or plate glass, dishes, ceramics or Pyrex, bulbs, etc.
- ALUMINUM / METAL CANS - Food and beverage cans, aluminum, steel, metal, and aluminum foil and pie tins.
- PLASTIC FOOD GRADE CONTAINERS

PET  - 2-liter or other size beverage containers.


HDPE  - Milk and water jugs, laundry, and household detergent bottles.

PVC  - Vegetable oil bottles, window cleaner, and detergent bottles.

LDPE  - Other food grade bottles.

PP  - Yogurt cups and syrup bottles.  
- Other plastic food containers.

(Look for the recycling symbols shown above. Acceptable bottles will have one of these #'s on the bottom.)

 Polystyrene (carry-out containers) is no longer accepted. Bottles that contained motor oil, pesticides, or chemicals will NOT be accepted.

Place your recycling bin at the curb on your regular pickup day. It's that easy!!  
Recycling will be collected on the same day as refuse, but at different times of the day.



# WASTE MANAGEMENT

## 800-796-9696

**WASTE MANAGEMENT OF ILLINOIS**

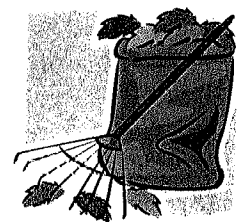
2100 Moen Avenue  
Rockdale, IL 60436-4200

PRESORT STANDARD  
U.S. POSTAGE  
PAID  
PERMIT NO. 13  
JOLIET, IL 60436

**IMPORTANT INFORMATION  
REGARDING YOUR REFUSE,  
RECYCLING, AND YARD WASTE  
DISPOSAL SERVICE**



**HOW TO HANDLE YOUR YARD WASTE:**



*Keep In Mind...A Healthy Lawn Needs Its Clippings!  
Whenever Possible --- DON'T BAG YOUR GRASS CLIPPINGS!  
Yard Waste Collection begins April 1 and ends November 30*

- When:** Yard waste pickup will begin with your first pickup in April and run through your last pickup in November, on your regular garbage day.
- Grass & Leaves:** Grass clippings and leaves must be placed in kraft biodegradable bags. Waste Management does offer a 96 gallon yard waste cart for rental or purchase. Please call (800) 796-9696 for more information.
- Brush & Branches:** Branches and tree limbs must be tied in bundles no longer than 4 feet and no heavier than 50 pounds. The diameter of the branches/limbs should not exceed 3" inches.
- Sod:** Sod is collected as refuse and should be placed in garbage bags not to exceed 50 pounds each. Sod may also be placed in kraft paper bags not to exceed 1/3 the height of the bag and not to exceed 50 pounds. Sod from whole lawn replacement will not be collected.

**UNBUNDLED BRUSH WILL NOT BE COLLECTED.**